



<b>4.</b>	<b>POPULATION</b>
-----------	-------------------

► **GENERAL DEMOGRAPHIC FEATURES**

	WBGs Total	West Bank	Gaza
<b>Total Population</b>	<b>1997 census:</b> 2,895,683	1,873,476 <sup>1</sup>	1,022,207
	<b>Projected 2000<sup>2</sup></b> 3,150,056		
	<b>Projected 2005<sup>2</sup></b> 3,986,813	2,514,480	1,472,333
	<b>Projected 2015<sup>2</sup></b> 5,758,360	3,517,154	2,241,206
	<b>Projected 2025<sup>2</sup></b> 7,401,797	4,408,941	2,992,856
<b>Population, 0-14 years of age (%)</b> :	47		
<b>Population, 0-19 years of age (%)</b> :	57.3		
<b>Birth rates</b> (% per 1,000)		42.9	46.3
<b>Population growth (estimates, 2000):</b>	3.63%	3.42%	4.02%
<b>Median Age</b> (years):	16		
<b>Sex ratio</b> (male-female):	102:100		
<b>Fertility rate:</b>	5.75		
<b>Life expectancy at birth:</b>	71.8 years		
<b>Average Household Size</b> (persons):	7	6.6	8.0

<sup>1</sup> Incl. East Jerusalem. <sup>2</sup> projected population, according to the PCBS medium series.  
 (Source: PCBS, *Population, Housing and Establishment Census*, Dec. 1997, and updates.)

**DISTRIBUTION OF THE PALESTINIAN POPULATION BY GOVERNORATES AND CITIES**

Locality	Number of Inhabitants	
	in Governorate	City only
Jenin	203,026	26,671
Tubas	36,609	11,756
Tulkarm	134,110	33,960
Qalqilya	72,007	31,730
Salfit	48,538	7,104
Nablus	261,340	100,396
Ramallah/AI-Bireh	213,582	18,297 / 28,351
Jerusalem	328,601*	210,209**
Jericho	32,713	13,911
Bethlehem	137,286	21,437
		Beit Jala 12,325
		Beit Sahur 1,281
Hebron	405,664	119,230
<b>Total West Bank</b>	<b>1,873,476</b>	
North Gaza	183,373	Jabalia 52,498
Gaza City	367,388	292,567
Deir Al-Balah	147,877	34,510
Khan Yunis	200,704	88,820
Rafah	122,865	49,615
<b>Total Gaza Strip</b>	<b>1,022,207</b>	
<b>TOTAL</b>	<b>2,895,683</b>	

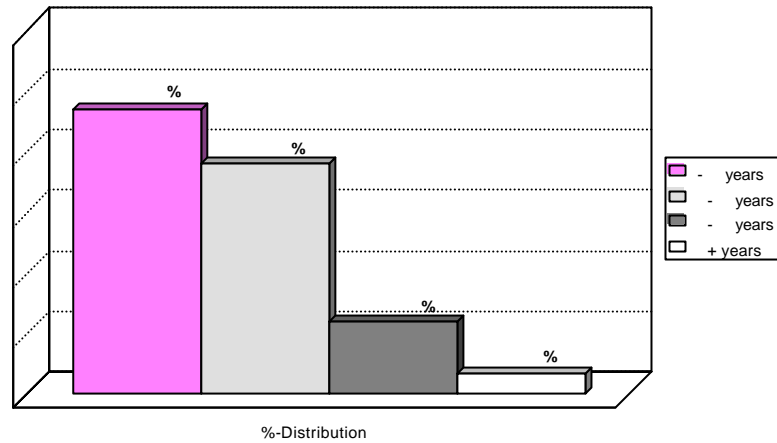
**NB:** While there are no newer numbers available, an approximate update can be made by taking into consideration the average annual growth rate of ca. 4%.

\* inside and outside checkpoints (estimates)      \*\* annexed East Jerusalem (estimates)  
 (Source: PCBS, *Population Census*, 1997.)



Fact Sheet - **POPULATION**

Age Structure, WBGs, 1999:



DISTRIBUTION OF THE PALESTINIAN PEOPLE WORLDWIDE, END OF 1999

INSIDE		OUTSIDE		
			I <sup>1</sup>	II <sup>2</sup>
West Bank & Gaza Strip <sup>1</sup>	3,084,880	Jordan	2,434,130	2,472,501
		Lebanon	449,735	456,824
		Syria	486,826	494,501
		Egypt	51,001	51,805
Areas Occupied in 1948 <sup>2</sup>	1,094,350	Saudi Arabia	287,250	291,778
		Kuwait & other Gulf	14,9786	14,9786
		Libya and Iraq	77,660	78,884
		Other Arab countries	5,796	5,887
		The Americas	209,705	216,196
		Other Countries	267,077	275,303
<b>Total Inside</b>	<b>4,179,230</b>	<b>Total Outside</b>	<b>4,418,966</b>	<b>4,495,826</b>

<sup>1</sup>PCBS, Projected Population, March 2000

<sup>2</sup> Salman Abu Sitta. *Palestine 1948 - Commemoration of Al-Naqba*. London: Palestinian Return Center, May 2000.

POPULATION OF ISRAEL, 2000

<b>Total population:</b>	6.676,000	<b>Projection of Population</b> (medium variant):			
• Jews	5.150,000				
• Non-Jews:	1.526,000	<b>2005</b>	<b>2010</b>	<b>2020</b>	
- Muslims	1.150,000	Jews	5.320,6	5.688,9	6.368,4
- Others	376,000	Muslims	1.124,4	1.299,8	1.676,6
		Christians	116,7	124,4	138,5
<b>Annual growth rate:</b>	2.4%	<b>Total</b>	<b>6.930,0</b>	<b>7.534,4</b>	<b>8.672,9</b>
<b>Jewish natural growth rate*:</b>	1.8%				

(Source: Israeli CBS, *Statistical Abstract of Israel*, 2000.)

\* Including new immigrants, an estimated 62% of whom, however, are not Jewish! ( 18 Sept. 2000).